

Knitted Bolero

Size to fit bust 82/86 cm [32"/34"] and 92/97 cm [36"/38"].

Directions for the smaller size are before the parentheses, with larger sizes inside. If there is only one figure, it applies to all sizes. All measurements are in centimetres (cm). For approximate inch sizes simply multiply by 0.4 (or divide by 2.54).

Materials Patons, quality Eco Cotton, 300(350) g #00071 khaki. 3.75-4 mm [size 5-6] needles and same size long circular needle, or size to obtain gauge.

Welt pattern K 1 WS rows and P 2 rows.

Basic pattern no. of sts. mult of 10 + 1 sts. + 2 edge sts.

See chart. Only RS rows are given, on WS rows work sts. as they appear, and P yarnovers.

For band work rows 1-10 once. Work all further rows as given in the method.

Note when decreasing ensure that a yarnover is worked for each time sts. are worked tog; where this is not poss, work K1 instead!

Gauge 21 sts. and 30 rows basic patt, each to 10 cm [4"].

METHOD

Back: cast on 93(103) sts. and for welt work 3 rows welt patt. Work 10 rows basic patt, then rep rows 11-12 of chart throughout as foll: edge st., the sts. before the motif, motif 8(9) times, end with the sts. after the motif, edge st.

When work measures 20(21) cm bind off for armhole shaping at each end 5 sts. once, then 1 st. on every 2nd row 5 times = 73(83) sts.

When work measures 38(40) cm bind off all sts.

Front with collar work from top down. Cast on 233(253) sts. and work welt as for back.



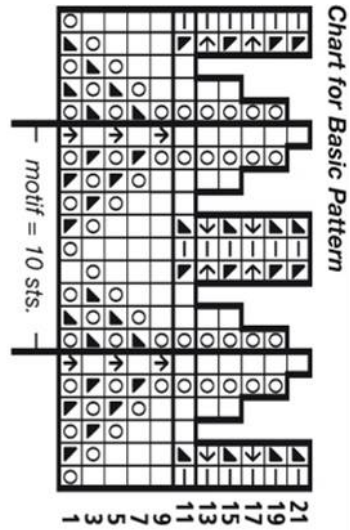
Work 10 rows basic patt, then rep rows 11-12 of chart throughout as foll: edge st., the sts. before the motif, motif 22(24) times, end with the sts. after the motif, edge st. When work measures 10 cm bind off 29 sts. at center for neck (= sts. 6-10 of motif, motif of 10 sts. twice and sts. 1-4 of motif), and cont to end over 102(112) sts. on either side sep. When work measures 12.5 cm work rows 13-14 of chart with decs as given = 82(90) sts., then rep rows 15-16 throughout. When work measures 18(19) cm work rows 17-18 of chart with decs = 62(68) sts., then work rows 19-22 with decs. Bind off rem 42(46) sts. firmly, to give a rounded shaping. Total height of work = 20(21) cm.

Sleeves (both alike) cast on 73(83) sts. and work welt as for back.

Work 10 rows basic patt, then rep rows 11-12 of chart throughout; work sts. as foll: edge st., the sts. before the motif, motif 6(7) times, end with the sts. after the motif, edge st. When work measures 46 cm bind off for sleeve cap at each end 5 sts. once, then on every 2nd row 2 sts. once, 1 st. 14(15) times, 2 sts. once and 4(5) sts. once, then bind off rem 19(25) sts.

Total height of work = 58(59) cm.

Finishing block pieces to measurements, cover with a damp cloth and allow to dry. Join shoulder seams from x to *, easing fronts slightly to fit. Sew collar to back from * to *. Sew sleeves in position, then close side seams from • to o, and close sleeve seams.



- Legend**
- = K1
 - ▣ = P1
 - ⊖ = 1 yarn-over
 - ⬆ = K2 tog
 - ⬇ = slip 1 knitwise, K1, pass slipped st. over
 - ⬇ = slip 2 tog knitwise, K1, pass slipped sts. over
 - ⬇ = K3 tog
 - ⊠ = slip 1 knitwise, K2 tog, pass slipped st. over

